

DC-MOT Tool (Magnetic Orienting Perforating Tool)

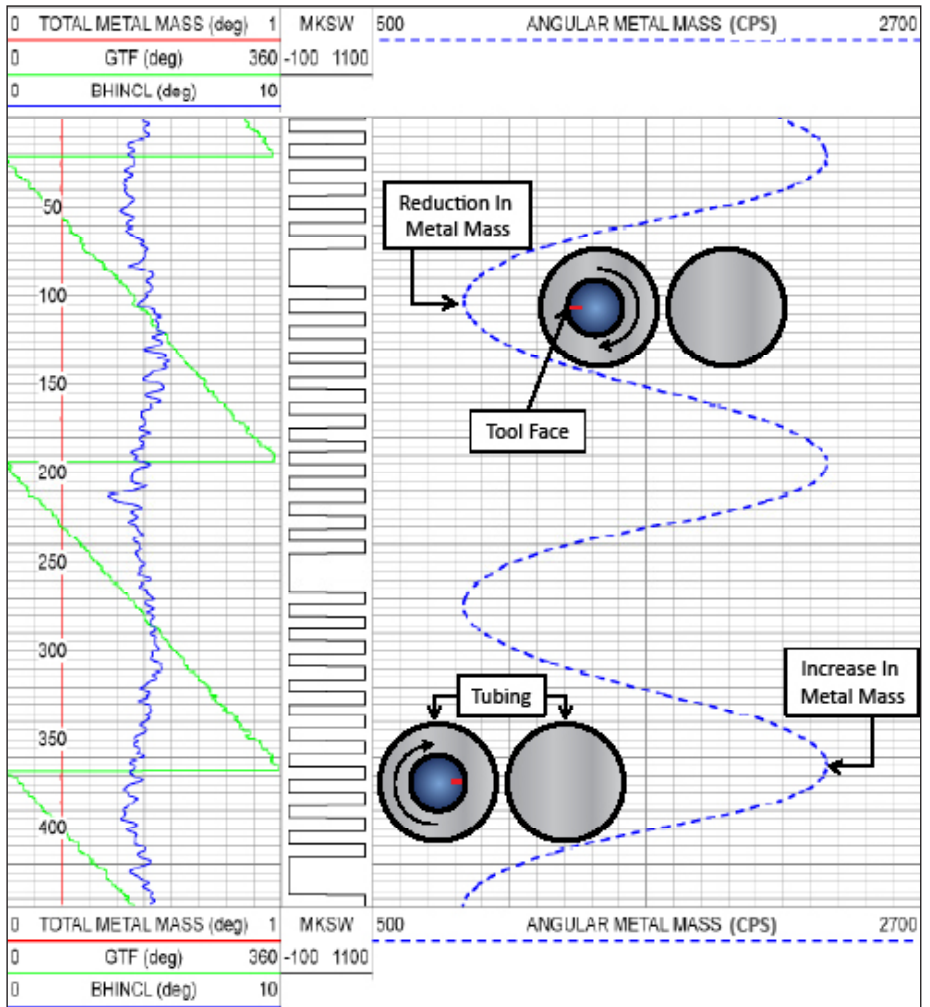
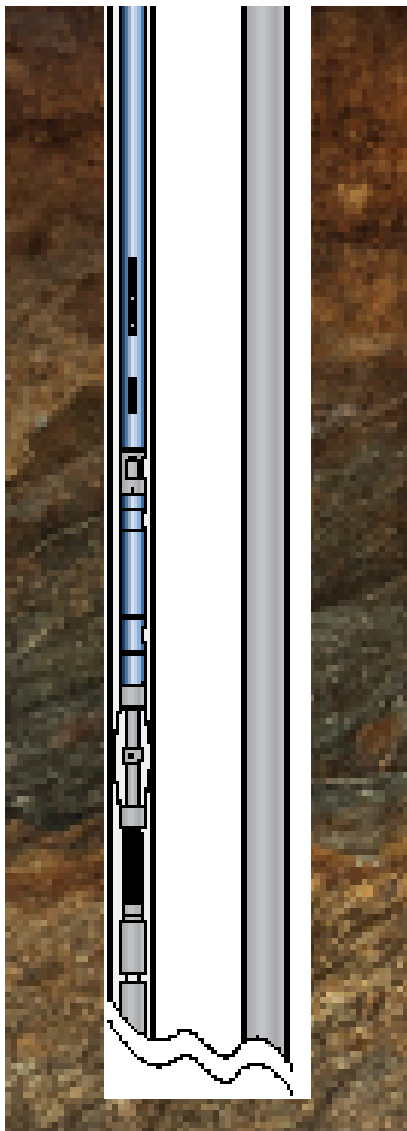
Titan Division | Instruments

Features

- Operates directly from SDS Warrior Well Logging System
- Telemetry data – 40 samples per second of all measured parameters
- Borehole inclination and gravity high side of perforating gun orientation from the vertical up to 35°
- Metal mass measurements to detect collar or other magnetic anomalies in the pipe or casing
- Continuous cable head voltage and internal tool temperature updates

Benefits

- Tool operation easily controlled using wireline voltage settings
- Increased magnetic directional sensitivity for better target resolution
- Ease of operation with Hunting's ControlFire® perforating system, or similar to standard negative fire perforator
- No need for additional external panel
- Operates on Warrior 8
- Increased data quality with the help of the high side indicator and inclination along with the MOT readings
- Total metal mass curve eliminates need to run a CCL with the tool and helps to identify hardware on the outside of casing as well as casing defects



Hunting's DC-MOT (Magnetic Orienting Perforating Tool) positions zero phased perforating guns to perforate a string of pipe without hitting the adjacent strings of pipe in the same well. It is ideal for wells completed with multiple strings of tubing or for control line avoidance when perforating externally wired casing.

Specifications

	1-3/4 in. [44.45]
Part Number	8037-17551EC075-12-06
Measurements:	
Angular Metal Mass – Position Resolution	+/-5°
Vertical Resolution (in.)/[cm]	12 [30.48]
Metal Mass – Collars & Casing Thickness Anomalies	Scaleable
Well Bore Inclination Accuracy – Vertical up to 35°	+/-2.5°
Gravity High Side - Vertical = 0°	+/-180° from Vertical
Gravity High Side Accuracy	+/-2°
Temperature Sensor Internal– Range (°F)[°C]	-25 – 375 [-32 – 190.5] +/-1°
Logging Speed (ft/min)/[m/min] – Metal Mass	Recommended Max: 60 [18.29]
Logging Speed (ft/min)/[m/min] – Angular Measurement	Stationary
Mud Type - Weight	Air, Gas or Liquids – No Limitations
Environmental:	
Operating Temperature Range (°F)[°C]	-25 - +350 [-32 - +177]
Maximum - Heat/Cool Range °/Minute (°F)[°C]	5.4 [3]
Vibration (3 axis) Operational Sweep Frequency (50 – 1000 Hz)	30 G RMS
Shock (Z – axis)	1000 G, .05 mS.
Shock (X – Y axis)	1000 G, .05 mS.
Mechanical:	
OD (in.)/[cm]	1.750 [4.445]
Length (in.)/[cm]	71.75 [182.25]
Weight (lbs)/[kg]	24 [10.87]
Material	High Strength Nonmagnetic Stainless Steel
Pressure Rating (psi)[MPa]	18,000 [124.1]
Max Tension (lbf)[kN]	60,000 [267]
Top - Bottom Connection	1-3/16 in. GO Box – 1-3/16 in. GO Pin
Electrical:	
Operating Voltage Range (VDC)	+45 to +150
Maximum Input Voltage (VDC)	+175
Operating Current (mA)	65
Transmitted Data	Telemetry
Transmitted Data Rate	40 Frames/Sec
Auxiliary Lower Tool Input	N/A
Cable Type	Single or Multi-Conductor

About Hunting's Titan Division

For successful cased hole logging and perforating services, tool reliability, availability, and time line of delivery are essential. Hunting supplies customers worldwide with the right tools to get the job done. Our product lines include state of the art, high quality wireline and tubing conveyed perforating (TCP) gun systems, hardware and accessories, shaped charges, and electronic logging tools.